

# Low-Tech

# Devices

## for Collecting, Processing, and Planting Seeds

*From the Editor:*

Without doubt, I get the most feedback from readers concerning the gizmos and gadgets people use to grow and plant native species. And without doubt, most growers feel that their improvisations are not really that special. In the following series of 7 short articles, you'll see how kitchen tools, badminton racquets, rock tumblers, and film canisters can be turned into efficient seed processing tools. I hope that some of these tricks can improve your nursery operations.

*Kas*

## CUISINART FOR CLEANING ELDERBERRY (*SAMBUCUS* spp. L. [CAPRIFOLIACEAE]) SEEDS

Michelle Truscott |

### ABSTRACT

The common food processor is an effective tool for cleaning elderberry (*Sambucus* spp. L. [Caprifoliaceae]) seeds. Seeds cleaned with this device can be stored in the refrigerator for years without developing mold.

### KEY WORDS

seed cleaning

### NOMENCLATURE

USDA NRCS (2002)

I prefer using a food processor, the kitchen Cuisinart (Model DFP Deluxe 11), for cleaning seeds of elderberry (*Sambucus* spp. L. [Caprifoliaceae]). At Cornflower Farms, we collect *Sambucus* berries in the wild at site-specific locations throughout California. Once we get the berries back to the nursery, we remove them by hand from the stems as the first step in the seed cleaning process. Then we add the berries to the food processor (Figure 1). Depending on how juicy the berries are, we may or may not need to add water. If the berries clump to the sides of the processor, we add enough water to ensure they swirl.

We run the food processor for about 1 min until we have a puree of berries. The puree is poured into a clean, empty bucket and then we slowly add water (Figure 2). Viable seeds sink to the bottom of the bucket while voided seeds and pulp float to the surface. The waste is decanted off the top and we keep repeating the process until we are left with clean seeds at the bottom of the bucket. The reason we pulled the berries off the stems is that otherwise the food processor chops the stems into little pieces that sink to the bottom of the bucket with the clean seeds. Once clean, we drain off all of the water and place the seeds on newspaper to surface dry (Figure 3), which may take 1 to 4 d depending on temperature and relative humidity. This process cleans seeds so well they can be stored in a refrigerator for 6 to 8 y without mold problems. Also, we found that seeds cleaned with the food processor are less likely to mold and rot during the 3-mo cold, moist stratification period necessary for germination.

### REFERENCE

USDA NRCS. 2002. The PLANTS database, version 3.5. URL: <http://plants.usda.gov> (accessed 14 Aug 2003). Baton Rouge (LA): The National Plant Data Center.



Figure 1. Elderberry fruits ready for cleaning and my trusty food processor.



Figure 2. Floating the debris away from clean seeds.



Figure 3. Clean elderberry seeds ready for storage.

### AUTHOR INFORMATION

Michelle Truscott, Grower  
Cornflower Farms Inc  
PO Box 896 | Elk Grove, CA 95759  
[michelle@cornflowerfarms.com](mailto:michelle@cornflowerfarms.com)

Photos by Michelle Truscott

## BLENDING DRY SEEDS CLEAN

Joseph D Scianna |

### ABSTRACT

A kitchen blender with a slow-speed pulse button has been used to clean small volumes of a variety of seeds.

### KEY WORDS

seed cleaning, Asteraceae, Poaceae, Rosaceae, Ranunculaceae, Onagraceae, Liliaceae

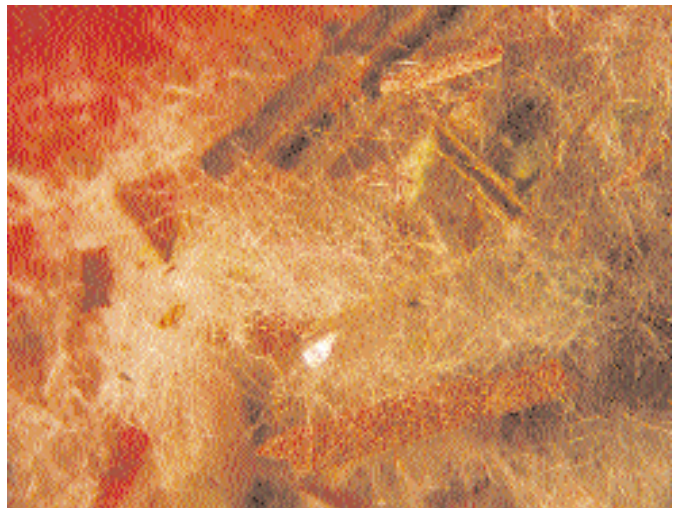
### NOMENCLATURE

USDA NRCS (2002)

At the Plant Materials Center in Bridger, Montana, we process and clean more than 300 wildland seed collections annually, many consisting of small volumes of seedheads yielding less than 10 g (0.35 oz) of bulk seeds. If the seeds contain awns, wings, or other appendages requiring removal, or if the seeds are held tightly in the seedheads, the small volume of material cannot be adequately threshed in our hammermill. Manual processing of small volumes on a rubbing board is labor intensive and time consuming. To improve efficiency, we have developed a simple procedure using a conventional household blender.

Our technique begins with wrapping the impeller blades of the blender with duct tape to minimize seed damage. We wrap the blades so that the tape does not unravel or fray during use, but do not use so much tape that the impellers vibrate during operation, or bind with seeds and stems during processing. We recently became aware that coating the impeller blades with liquid plastic in lieu of duct tape has been used successfully in similar applications (Thomas 2003). An important feature of the blender is a low-speed pulse button, or other control that reduces impeller speed. The standard on:off low-speed setting on most blenders is too fast for seed processing.

By intermittently “pulsing” the low-speed setting, we control the duration and intensity of processing. Another important factor is the amount of seeds or seedheads initially placed in the blender. Too little material requires the addition of rice hulls or other inert material to create adequate abrasion. Too much material results in excessive maceration near the impellers, with little or no abrasion toward the top of the blender. The ideal amount of material to place in a blender varies with its size, but we find that 25% to 33% of storage capacity works well. Frequent inspection during processing is critical to assure that the seeds are not being damaged. Final



Photos by Joseph D Scianna

Using the blender, the extremely small seeds of fireweed (*Chamerion angustifolium* (L.) Holub ssp. *angustifolium*) collected in the field (top) can be extracted from the hair and other debris (bottom).

cleaning is by sieving and winnowing or processing over a small fanning mill.

We use this technique successfully on many genera of the Asteraceae including pearly everlasting (*Anaphalis* spp. DC.), arnica (*Arnica* spp. L.), balsamroot (*Balsamorhiza* spp. Nutt.), daisy (*Erigeron* spp. L.), blanket flower (*Gaillardia* spp. Foug.), golden aster (*Heterotheca* spp. Cass.), goldenrod (*Solidago* spp. L.), and aster (*Symphotrichum* spp. Nees). We have also used it with feathery achenes of *Geum* L. spp. (Rosaceae) and *Pulsatilla* P. Mill. spp. (Ranunculaceae), winged seeds of pines (*Pinus* spp. L. [Pinaceae]) and Douglas-fir (*Pseudotsuga menziesii* (Mirbel) Franco [Pinaceae]), and grass seeds (Poaceae) such as needlegrass (*Achnatherum* spp. Beauv.), wheatgrass (*Pseudoroegneria* spp. (Nevski) A. Löve), and wildrye (*Elymus* spp. L.). It also works well with dehiscent capsules of willowherbs (*Epilobium* spp. L. [Onagraceae]) and glacier lily (*Erythronium* spp. L. [Liliaceae]).

#### REFERENCES

- Thomas D. 2003. Modifying blender blades for seed cleaning. *Native Plants Journal* 4:72–73.
- USDA NRCS. 2002. The PLANTS database, version 3.5. URL: <http://plants.usda.gov> (accessed 20 Jun 2003). Baton Rouge (LA): The National Plant Data Center.

#### AUTHOR INFORMATION

**Joseph D Scianna**  
Horticulturist  
USDA Natural Resources Conservation Service  
Bridger Plant Materials Center  
Route 2 Box 1189  
Bridger, MT 59014  
[Joe.Scianna@mt.usda.gov](mailto:Joe.Scianna@mt.usda.gov)

## COLLECTING SEEDS FROM SOUTHEASTERN US WOODLAND SPECIES

Barry Glick |

#### ABSTRACT

In order to collect seeds from a wide range of southeastern US woodland species with diverse dispersal strategies, specially made collection bags are placed over plants. After collection, seeds are separated from debris with a strainer and further cleaned with a fanning mill. This method can be used for efficient collection of large numbers of seeds at ideal ripeness, in a nursery or in the wild.

#### KEY WORDS

seed dispersal, *Geranium maculatum*, *Jeffersonia diphylla*, *Viola* species, *Mitella* species, *Sanguinaria canadensis*, *Hepatica americana*, *Asarum canadense*, *Dicentra cucullaria*, *Dodecatheon* species, *Spiranthes cernua*, *Tipularia discolor*

#### NOMENCLATURE

USDA NRCS (2002)

A grower cannot be in all places at all times, especially when producing and collecting seeds from hundreds of species. Ripening seeds are a temperature dependent phenomena, and this is further complicated by each species having its own prolonged period of fruit maturation and dispersal strategy. At Sunshine Farms and Gardens, we collect seeds and grow many of the most desired southeastern US woodland species. Many of these species can be challenging to collect seeds from due to unique dispersal mechanisms of the fruits or dispersal agents or simply due to the small size of the seeds and fruits. We have come up with an efficient and effective method to address this challenge.

Southeastern woodland species are as diverse in their dispersal strategies and fruits as in their wide range of attractive flowers and growth forms. Spotted geranium (*Geranium maculatum* L. [Geraniaceae]) is a classic example of explosive dehiscence, where the seeds are spring loaded and catapulted away from the plant when the fruits mature and split along the sutures. Twinleaf (*Jeffersonia diphylla* (L.) Pers [Berberidaceae]) produces a unique seed pod that resembles a hooded pouch with a lid at the top that opens with a hinge-like attachment when mature. Similarly, several violets (*Viola* spp. L. [Violaceae]) have small pods that explode upon maturation.

Alternatively, seeds may be dispersed by an external force such as raindrops, which disseminate the tiny black seeds of

miterwort (*Mitella* spp. L. [Saxifragaceae]) from the opened saucer-shaped capsules. Ants are also important dispersal agents in woodlands and rapidly carry away the seeds of bloodroot (*Sanguinaria canadensis* L. [Papaveraceae]), Canadian wild ginger (*Asarum canadense* L. [Araceae]), American hepatica (*Hepatica nobilis* Schreb. var. *obtusata* (Pursh) Steyermark [Ranunculaceae]) and Dutchman's breeches (*Dicentra cucullaria* (L.) Bernh. [Fumariaceae]).

Shooting star (*Dodecatheon* spp. L. [Primulaceae]) and Virginia bluebells (*Mertensia virginica* (L.) Pers. ex Link [Boraginaceae]) have capsules that open quickly upon maturation, while native orchids (Orchidaceae), such as nodding ladies tresses (*Spiranthes cernua* (L.) L.C. Rich) and crane fly orchid (*Tipularia discolor* (Pursh) Nutt.), have dust-like seeds that are dispersed immediately. Such small seeds and fruits can also be difficult or time consuming to collect seeds from.

In order to collect seeds from such a wide range of species, we have designed specially made collection bags that we place over our stock plants in the nursery as seeds approach maturation. The bags are made from a mill-spun polyester fiber that is rot and UV resistant and last for many years. Bags are available in 1.2 x 1.8 m (4 x 6 ft), 1.2 x 2.4 m (4 x 8 ft) and 1.2 x 3 m (4 x 10 ft) sizes from our nursery. We tie the bags over stock plants as the fruits are maturing and include a couple of marbles to help weigh them down.

After collection, seeds are passed through a metal strainer to separate seeds from debris. Finally, we run our seedlots through a fanning mill using various size screens to provide clean seeds. This year, we will collect around 6.8 million seeds from hundreds of plants in our nursery, many of them by using this method. This ensures that we capture seeds when they are ripe and protects them from loss. Our collection bags can also be used for wild collections for many other species that have rapid dispersal or present other problems for the seed collector.

## REFERENCE

USDA NRCS. 2002. The PLANTS database, version 3.5. URL: <http://plants.usda.gov> (accessed 18 Aug 2003). Baton Rouge (LA): The National Plant Data Center.



Photos by Barry Glick

## AUTHOR INFORMATION

**Barry Glick**  
Sunshine Farms and Gardens  
HC 67 Box 539 B  
Renick, WV 24966  
[barry@sunfarm.com](mailto:barry@sunfarm.com)  
[www.sunfarm.com](http://www.sunfarm.com)

## RACQUETS, HOPPERS, AND FELT BOARDS— LOW-TECH DEVICES FOR PROCESSING SEEDS

Scott Jensen |

### ABSTRACT

In Utah, racquets and hoppers are used to collect small lots of long-leaf hawksbeard (*Crepis acuminata* Nutt. [Asteraceae]) and pale mountain dandelion (*Agoseris glauca* (Pursh) Raf. [Asteraceae]). These seedlots are often contaminated with squirreltail (*Elymus elymoides* (Raf.) Swezey [Poaceae]) and cheatgrass (*Bromus tectorum* L. [Poaceae]). We toss the mixed seeds at a large piece of plush felt—the composite seeds fall to a collection container but the appendages on the grasses stick to the felt.

### KEY WORDS

seed cleaning, Asteraceae, *Crepis acuminata*, long-leaf hawksbeard, *Agoseris glauca*, mountain dandelion, Poaceae, *Elymus elymoides*, squirreltail, *Bromus tectorum*, cheatgrass

### NOMENCLATURE

USDA NRCS (2002)

At the USDA Forest Service Shrub Sciences Laboratory, we collect the small-seeded composites (Asteraceae) long-leaf hawksbeard (*Crepis acuminata* Nutt.) and pale mountain dandelion (*Agoseris glauca* (Pursh) Raf.) by hand or with racquets and hoppers. Badminton racquets have a tight weave and are ideal for collecting lightweight seeds. Tennis racquets can be used on shrub species. In either case, we construct a hopper using cordura cloth sown onto a round frame (Figure 1). The cloth is attached to the frame so that the center has a drop down and seeds are not blown out of the hopper. When target species are in the open and higher in stature than surrounding vegetation, I find the racquet and hopper the fastest collection method. If the wind is blowing, I'll hand pick individual plants, immediately placing the seeds from each head into a bag.

Of course, some disparity in ripening time occurs among plants in a population. Because you may not be able to return to the site repeatedly to maximize a collection, we have experimented with collecting heads prior to full ripening. On the same day at the same site, long-leaf hawksbeard collected early (seed heads not open) had 40% viability while those collected with open heads yielded 61% viability. The effect of storage on viability of these 2 lots is unknown, but it is apparent that



Figure 1. Collecting Asteraceae seeds with badminton racquet and a hopper made from cordura cloth sown onto a round frame.



Figure 2. When tossed at a piece of felt, desired Asteraceae seeds fall into a collection pan but unwanted grass seeds, with their prickly appendages, are caught on the felt.

Photos by Scott Jensen

closed head collections may yield some viable seeds. If the site is particularly windy a larger proportion of seeds may be harvested by early collection.

For small lot applications we have not found it necessary to remove the pappus from the achene, so cleaning is simply a matter of separating the chaff. Larger material can be picked out by hand or separated by a screen. Two grasses (Poaceae), squirreltail (*Elymus elymoides* (Raf.) Swezey) and cheatgrass (*Bromus tectorum* L.), are the most common seeds that contaminate our lots. We remove these species on our specially designed felt board. We simply drape a yard of plush felt material over a similarly sized plywood board, incline the board to a steep angle, and toss handfuls of seeds at the board. Most of the composite seeds rebound off the board and fall to the collection pan beneath. Shaking and tapping the board helps free any remaining composite seeds. Appendages on the grass seeds are caught on the loose weave of the felt (Figure 2). Different weaves may be best suited for different problems posed by various seed types. We now use the plush felt material whenever prickly seeded material needs to be separated from a seed lot.

## REFERENCE

USDA NRCS. 2002. The PLANTS database, version 3.5. URL: <http://plants.usda.gov> (accessed 20 Jun 2003). Baton Rouge (LA): The National Plant Data Center.

## AUTHOR INFORMATION

### Scott Jensen

Botanist  
USDA Forest Service  
Shrub Sciences Laboratory  
735 N 500 E  
Provo, UT 84606-1865  
sljenson@fs.fed.us

## CLEANING GRASS SEEDS

Colleen Archibald and Craig Dremann |

### ABSTRACT

Wooden frames with hardware cloth provide an easy way to effectively pre-clean small lots of grass seeds in the field. We describe frames with 2 sizes of cloth used for western grass species.

### KEY WORDS

Poaceae, *Elymus*, *Bromus*, *Festuca*, *Koeleria*, *Deschampsia*, wildrye, brome, fescue, prairie junegrass, hairgrass

### NOMENCLATURE

USDA NRCS (2002)

In the field, seed heads of small lots of grass (Poaceae) can be harvested with scissors or small scythes and placed into paper bags, making sure to make a donut hole in the center of filled bags. This allows air to penetrate down to the bottom of the bag and prevents seeds from overheating in the field (Figure 1). Rather than bringing all of the high moisture content plant material back to the nursery for processing, drying, and cleaning, we find it useful to coarse screen the material in the field. For this screening, we constructed simple frames with hardware cloth, scrap lumber, and woodscrews.

We attached large diameter hardware cloth (6.35 mm [0.25 in] holes) to frames made from scrap wood (66 x 71 cm [26 x 28 in] long). Small wooden flaps can be secured to the sides of the frames to give the frames some height. The hardware cloth is secured between wood frames with woodscrews. Once constructed, we used the frames (Figure 2) for cleaning directly after harvest in the field. It is essential to take a drop cloth and



Photo by David B Davis

Figure 1. A donut hole in the collection bag allows air circulation and prevents seeds from overheating in the field.



Photo by David B Davis



Figure 2. A wooden frame covered with hardware cloth makes an effective grass seed cleaning device.

paper bags, too. After collecting seed heads, we sit on the ground with the screen and rub the plant material vigorously a few times to dislodge the seeds from the inflorescences, which fall onto the drop cloth. We pour seeds into paper bags for transport back to the nursery.

Wildrye (*Elymus* spp. L.) and bromes (*Bromus* spp. L.) are species we commonly and easily pre-clean in the field with our screens. For smaller-seeded grass species, such as prairie junegrass (*Koeleria macrantha* (Ledeb.) J.A. Schultes), hairgrass (*Deschampsia* spp. Beauv.), and fescues (*Festuca* spp. L.), we use frames with smaller diameter hardware cloth (3.1 mm [0.125 in] holes).

We think you will be surprised how easily small lots of many species can be cleaned with this method, and how minimal the amount of chaff in the seed lot will be.

## REFERENCE

USDA NRCS. 2002. The PLANTS database, version 3.5. URL: <http://plants.usda.gov> (accessed 20 Apr 2003). Baton Rouge (LA): The National Plant Data Center.

## AUTHOR INFORMATION

Colleen Archibald, Biological Technician  
USDA Forest Service | J Herbert Stone Nursery  
2606 Old Stage Road | Central Point, OR 97502  
[carchibald@fs.fed.us](mailto:carchibald@fs.fed.us)

Craig Dremann, Co-Owner  
The Reveg Edge  
PO Box 609 | Redwood City, CA 94064

## TUMBLING FOR SEED CLEANING AND CONDITIONING

David Dreesen |

### ABSTRACT

Small rock tumblers can be used to clean and condition seeds both in an aqueous and a dry mode. During the process, grit and gravel remove fruit pulp and abrade seed coats. Wet tumbling of seed aids imbibition, leaches water-soluble germination inhibitors, and may partially substitute for cold stratification for some shrub seed lots.

### KEY WORDS

Oleaceae, *Forestiera pubescens* var. *pubescens*, New Mexico olive, Platanaceae, *Platanus wrightii*, Arizona sycamore, Grossulariaceae, *Ribes aureum*, *Ribes cereum*, Solanaceae, *Lycium torreyii*, wolfberry, Cornaceae, *Cornus sericea* ssp. *sericea*, redosier dogwood

### NOMENCLATURE

USDA NRCS (2002)

At the Los Lunas Plant Materials Center in New Mexico, we use small hobby-size rock tumblers to accomplish a number of seed cleaning and seed conditioning treatments. The principal application of the tumbler has been the maceration of dried or hydrated fruit pulp. We commonly use it to remove pulp from dried New Mexico olive (*Forestiera pubescens* Nutt. var. *pubescens* [Oleaceae]) fruits. The fruits are collected in late summer or fall after the pulp has dehydrated and adheres tenaciously to seeds. A wet tumbling procedure employing pea gravel/crushed stone and water in a rubber-lined tumbler vessel allows the rehydration of the pulp and the slow abrasion of pulp from seeds. The amount of water is minimized so that the gravel and fruit makes a slurry. This method is not quick, but the tumbler can be run overnight and checked the following day. After a course of tumbling, the contents are dumped into a sieve and the pulp is washed off, leaving clean seeds. The tumbling process is repeated until clean seeds are achieved (Figure 1).

Another cleaning application involves removal of fine hairs attached to achenes of Arizona sycamore (*Platanus wrightii* S. Wats. [Platanaceae]). The dry fruiting heads are crushed under water to partially liberate the achenes while preventing dust and fine hairs from becoming airborne (Figure 2). A slurry of achenes with pea gravel is tumbled and the hairs detach over

time and can be separated using sieves and strong sprays of water. In addition, the wet tumbling thoroughly imbibes seeds and may leach out water soluble germination inhibitors. After cleaning and imbibition, seeds are typically cold stratified.

Dry tumbling to scarify legume seeds has been investigated (Bonner and others 1974; Dreesen and Harrington 1997). The rationale for dry tumbling is to avoid seed destruction that can readily occur with sulfuric acid, boiling water, and high energy impact mechanical scarification treatments. Dry tumbling is a slow process taking several days to a week, but we often use it when we have small seed lots we do not want to risk with other scarification treatments. The procedure uses carborundum grit (sold by rock tumbler dealers), pea gravel, and seeds. After tumbling, scarified seeds are separated from the grit and gravel with sieves. The grit can also be reused by washing the seed coat debris through a fine sieve or by floating off the debris and then drying the grit. Different size grits are available and we typically use fairly coarse material. Coarse grit size is still much smaller than most legume seeds, allowing the easy sieve separation of grit, seeds, and gravel.

Wet tumbling can be used for scarification if an abrasive (typically pea gravel) is incorporated in the seed and water slurry (Dreesen and others 2002). The force imparted to the grit by the tumbling gravel facilitates abrasion. Although this treatment method may result in some seed coat degradation, other effects may be more important, such as assuring complete imbibition in well-aerated water and the leaching of water soluble germination inhibitors in the seed coat. A typical treatment would involve wet tumbling for several days to a week with daily changes of water.

For a few species, wet tumbling may partially substitute for a cold stratification requirement. Two currant species (*Ribes aureum* Pursh and *R. cereum* Dougl. [Grossulariaceae]) and wolfberry (*Lycium torreyii* Gray [Solanaceae]) generally require 2 to 3 m of cold stratification to achieve acceptable germination. Wet tumbling followed by 1 to 2 wk of storage in a warm moist environment has resulted in germination without cold stratification. The dry seeds of another important riparian species, redosier dogwood (*Cornus sericea* L. ssp. *sericea* [Cornaceae]), generally require 1 h scarification in concentrated sulfuric acid and then 2 to 3 mo of cold stratification for acceptable germination. Using fresh fruit with hydrated pulp, rapid germination has been achieved by wet tumbling the fruit with 1 to 2 cm (0.5 to 0.75 in) gravel. Most of the pulp is removed in the first day of tumbling and separated by screening and float/sink manipulations in water. After pulp removal, seeds are wet tumbled for several more days with daily water changes. The imbibed seed is then stored in a warm moist environment; germination starts in about 7 to 10 d and continues for several weeks. Although a limited number of species have been tested with wet tumbling for seed conditioning, additional species may benefit from this treatment.



Figure 1. The pulp of naturally dehydrated fruits (top) of New Mexico olive can be removed using a rock tumbler, leaving extremely clean seeds (bottom).



Figure 2. At Los Lunas Plant Materials Center, dry fruiting heads of Arizona sycamore, seen lower left, are crushed under water in a large pan. The hairs agglomerate into balls (gray sieve in foreground). A slurry of achenes and pea gravel are tumbled in the rock tumbler to dislodge the hairs. Finally, the achenes, hairs, and pea gravel are separated with soil sieves with the cleaned achenes visible in the brass sieve (background).

Photos by Tara Luna

## REFERENCES

- Bonner FT, McLemore BF, Barnett JP. 1974. Presowing treatment of seed to speed germination. In: Schopmeyer CS, technical coordinator. Seeds of woody plants in the United States. Washington (DC): USDA Forest Service. Agriculture Handbook No. 450. p 126–135.
- Dreesen DR, Harrington JT. 1997. Propagation of native plants for restoration projects in the Southwestern U.S.—preliminary investigations. In: Landis TD; Thompson JR, technical coordinators. National proceedings, forest and conservation nursery associations. Portland (OR): USDA Forest Service, Pacific Northwest Research Station. General Technical Report PNW-GTR-419. p 77–88.
- Dreesen DR, Harrington J, Subirge T, Stewart P, Fenchel G. 2002. Riparian restoration in the southwest: species selection, propagation, planting methods, and case studies. In: Dumroese RK; Riley LE; Landis TD, technical coordinators. National proceedings: forest and conservation nursery associations—1999, 2000, and 2001. Ogden (UT): USDA Forest Service Rocky Mountain Research Station. Proceedings RMRS-P-24. p 253–272.
- USDA NRCS. 2002. The PLANTS database, version 3.5. URL: <http://plants.usda.gov> (accessed 10 Jun 2003). Baton Rouge (LA): The National Plant Data Center.

## AUTHOR INFORMATION

David Dreesen

Horticulturist

USDA Natural Resources Conservation Service

Los Lunas Plant Materials Center

Los Lunas, NM 87031

[David.Dreesen@nm.usda.gov](mailto:David.Dreesen@nm.usda.gov)

## LOW COST TOOLS FOR SEED COLLECTION AND SEED SOWING

Dawn Thomas |

### ABSTRACT

A modified 35-mm film canister is a useful tool for controlled sowing of small-seeded native species, and a simple, metal, custom-made harvester makes for efficient collection of late-season fleshy fruits.

### KEY WORDS

Salicaceae, *Populus*, *Salix*, *Philadelphus lewisii*, Hydrangeaceae, *Carex*, *Schoenoplectus*, Cyperaceae, *Juncus*, Juncaceae, *Rosa woodsii*, Rosaceae, *Symphoricarpos albus*, Caprifoliaceae

### NOMENCLATURE

USDA NRCS (2002)

In my nursery program, I find that simple, inexpensive tools often work well. Two tools that I use regularly are a 35-mm film canister with a hole punched in the lid, and a custom-made, “fingered,” tin fruit harvester.

### FILM CANISTER FOR ACCURATE SEED SOWING

I use a film canister to accurately sow small seeds. First, I measure the size of seeds of the species I intend to sow to get an idea of how large or small to make the hole in the film canister lid. Next, I heat the tip of a piece of wire and melt a hole in the center of the lid from the bottom side out. I found that if I melt the hole from the top inward, seeds will hang up on the plastic edges around the hole and will not shake through easily. I test the shaker to see how many seeds come through the lid by simply turning it over with 1 or 2 shakes. I modify the size of the opening on a new film canister lid based on the results.

For willows (*Salix* L.), quaking aspen (*Populus tremuloides* Michx.), and black cottonwood (*Populus balsamifera* ssp. *trichocarpa* (Torr. & Gray ex Hook.) Brayshaw [Salicaceae]) seeds, I try for a hole of sufficient size to allow 2 seeds to easily fall through the opening per shake so that nursery workers do not have to vigorously shake the containers. By taking time to make the hole size accurate, I reduce the amount of seeds sown per container, the time it takes to sow the crop, and eliminate hours of thinning multiple germinants per container (Figure 1).

This method works well for other small-seeded species, such as Lewis’ mockorange (*Philadelphus lewisii* Pursh



Figure 1. Melting a hole in film canister lid converts it into an inexpensive but effective device for sowing small seeds.



Figure 2. A custom-made metal harvester for collecting fruits.

Photos by Dawn Thomas

[Hydrangeaceae]) and for many wetland species, such as sedges (*Carex* L.), bulrushes (*Schoenoplectus* (Reichenb.) Palla [Cyperaceae]), and rushes (*Juncus* L. [Juncaceae]).

### CUSTOM-MADE TIN FRUIT HARVESTER

I designed a metal fruit harvester out of tin so that we could efficiently harvest large quantities of late-season fleshy fruits, such as woods rose (*Rosa woodsii* Lindl. [Rosaceae]) and snowberry (*Symphoricarpos albus* (L.) Blake [Caprifoliaceae]). The end of the scoop has several metal fingers that are spaced so that when the fruit-bearing stems are combed through the fingers, the fruits are pulled off but the stems pass through the fingers undamaged. This creates an easy and debris-free harvest of fruits when used after leaf fall in late autumn. The tin fruit harvester can be made cheaply by any local sheet metal shop and customized for late season fruits in your area (Figure 2).

### AUTHOR INFORMATION

**Dawn Thomas**  
 Nursery Manager  
 Salish-Kootenai Tribal College Native Plant Nursery  
 PO Box 70  
 Pablo, MT 59855  
 Dawn\_Thomas@skc.edu

### REFERENCE

USDA NRCS. 2002. The PLANTS database, version 3.5. URL: <http://plants.usda.gov> (accessed 3 Dec 2003). Baton Rouge (LA): The National Plant Data Center.

**Wheatland West Seed**

Mined Land Reclamation  
 Source ID Seed

Penstemons  
 Antelope Bitter Brush  
 Fourwing Saltbush

Custom Collections  
 Wetland Seeds  
 Upland Seeds  
 Turf Grass

(800) 676-0191  
 (435) 734-2371  
 Fax (435) 723-1903

e-mail: [oboyce@wheatlandseed.com](mailto:oboyce@wheatlandseed.com)  
 PO Box 513, Brigham City UT 84302